

DOCUMENT 2.10C

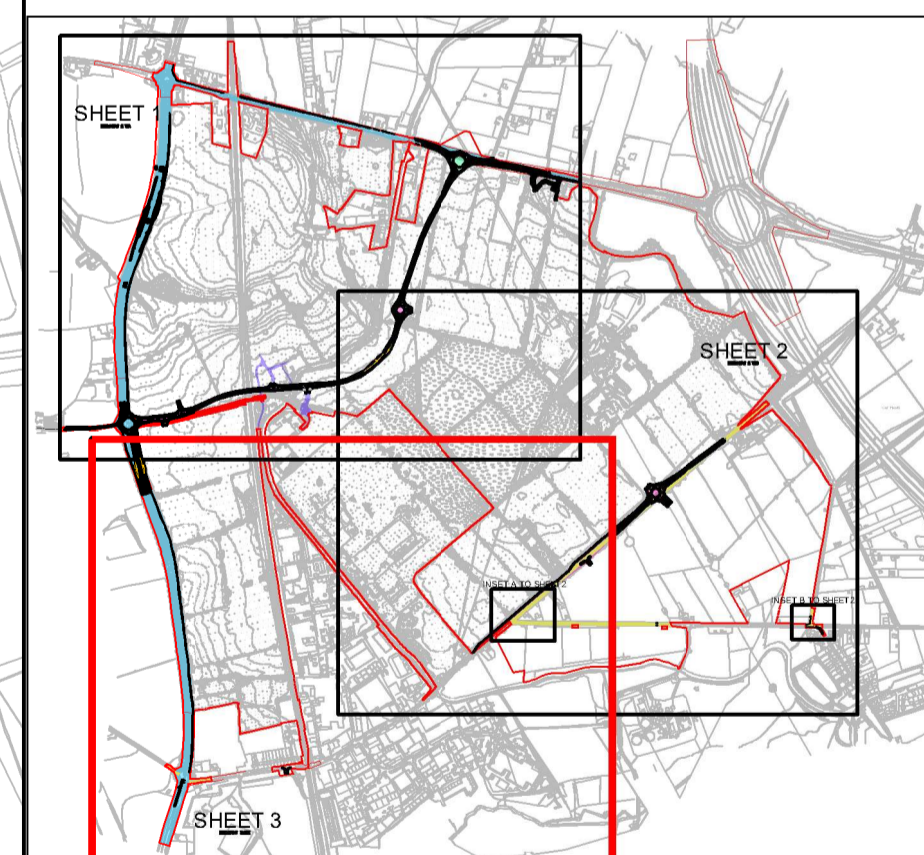
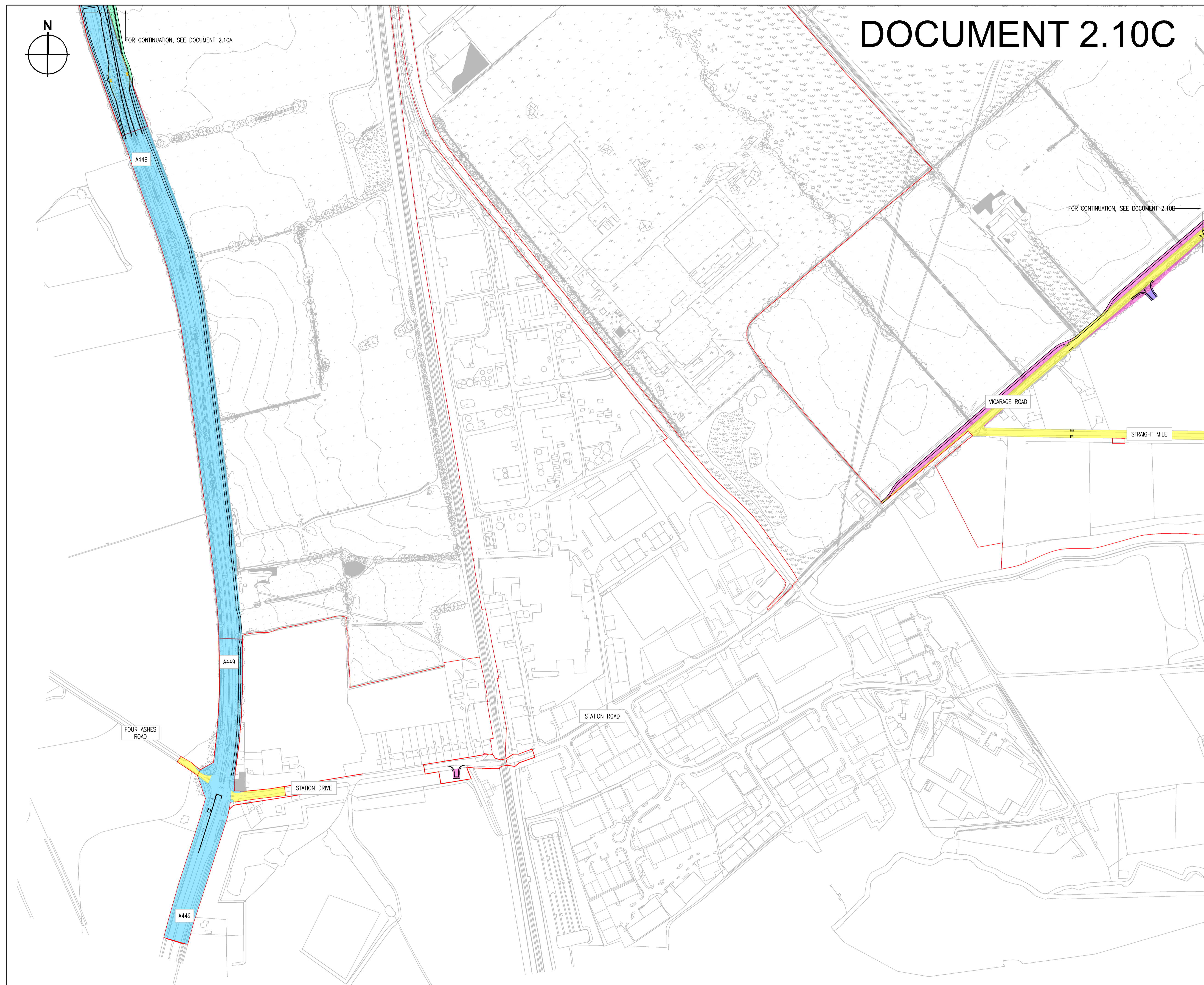
FOR CONTINUATION, SEE DOCUMENT 2.10A

FOR CONTINUATION, SEE DOCUMENT 2.10B

- KEY**
- ORDER LIMITS
 - LAND TO BECOME HIGHWAY MAINTAINABLE BY HIGHWAYS ENGLAND
 - LAND TO BECOME HIGHWAY MAINTAINABLE BY STAFFORDSHIRE COUNTY COUNCIL
 - EXISTING HIGHWAYS ENGLAND ADOPTED HIGHWAY
 - EXISTING STAFFORDSHIRE COUNTY COUNCIL ADOPTED HIGHWAY
 - EXISTING STAFFORDSHIRE COUNTY COUNCIL ADOPTED HIGHWAY TO BE STOPPED UP
 - NEW UNADOPTED HIGHWAY

NOTES:

LIMITS OF DEVIATION SHOWN ON THE WORKS PLANS (DOCUMENT SERIES 2.2) AND SET OUT IN ARTICLE 4 OF THE DEVELOPMENT CONSENT ORDER.



C - MINOR AMENDMENTS	
B - MINOR AMENDMENTS	
Revisions: A - FIRST ISSUE	
West Midlands Interchange	
Project THE WEST MIDLANDS RAIL FREIGHT INTERCHANGE ORDER 201X	
Drawing Status SUBMISSION	
Drawing Title Drawing Size A1 FUTURE HIGHWAY MAINTENANCE PLAN SHEET 3	
Regulation 5 (2) (o)	Document 2.10C
Drawn RM	Date: JUNE 2018 Scale 1: 2500 Reviewed IF
Drawing No. WSP-70001979-SK-091	Rev. C